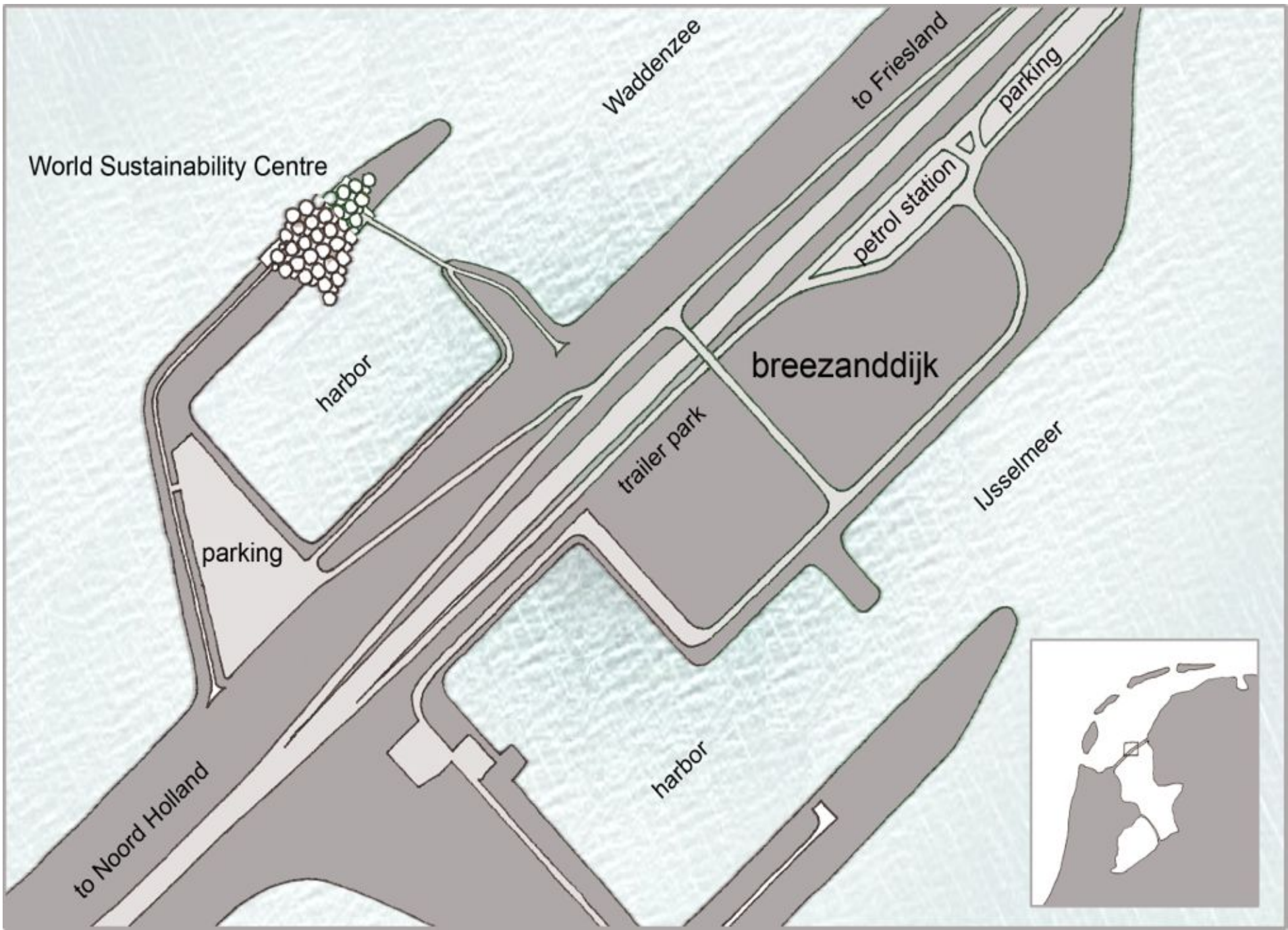


in-between conditions

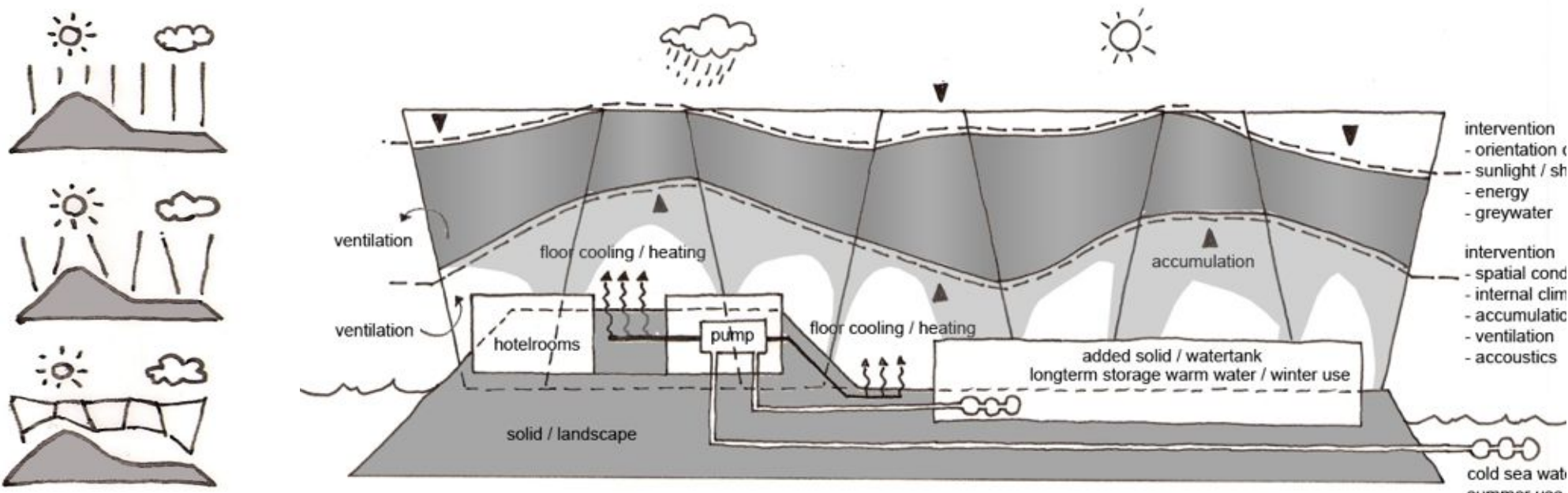
Located alongside the Afsluitdijk, a small piece of headland is set to be the location for the new World Sustainability Centre Afsluitdijk (WSCA). This former construction site and its harbor are situated on the Waddenzee-side of Breezanddijk, near to Friesland, and were part of the work island during the construction of the dike. Nowadays, Breezanddijk is a popular stopover for tourists that come to see the dike. On the other side of the dike, at the IJsselmeer-side of Breezanddijk, there's a petrol station, a large parking lot, a trailer park and another small harbor that is currently used by the Dutch military. A turning point connects the programme on both sides of the dike and the road that goes over it.

The conditions at the construction site are very much different from what one experiences on the dike itself; even harder winds, strong tidal streams and the ever-present raging of the sea. Also, as it is one of the few places on the Afsluitdijk where one can actually get off the dike to have a full overview of the Waddenzee, it is here that you can feel the absence of the predominant, monotonous view the Afsluitdijk offers as you travel along it. It is a place even more isolated than the dike itself.

Along with these conditions, it is also its specific shape, texture and structure that emphasizes what the site is used for nowadays, what its actual meaning has become; a place where ships can harbor during a storm, an off coast shelter against the rough elements of this extraordinary landscape. This connotation seamlessly fits the notion of what we think the WSCA at this specific location -or even more generally, any building at any given location- also should be in the first place; not only just fit to endure the local conditions, but also to continuously derive its very meaning, its purpose and physique from these conditions. A place in-between conditions.



Situation

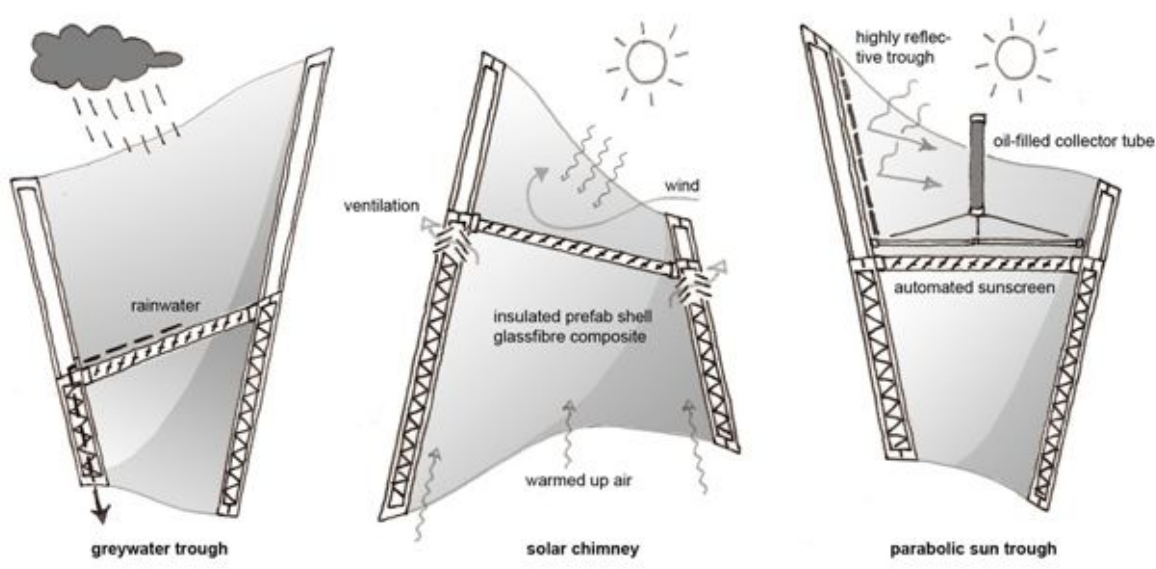


Climatological diagrams

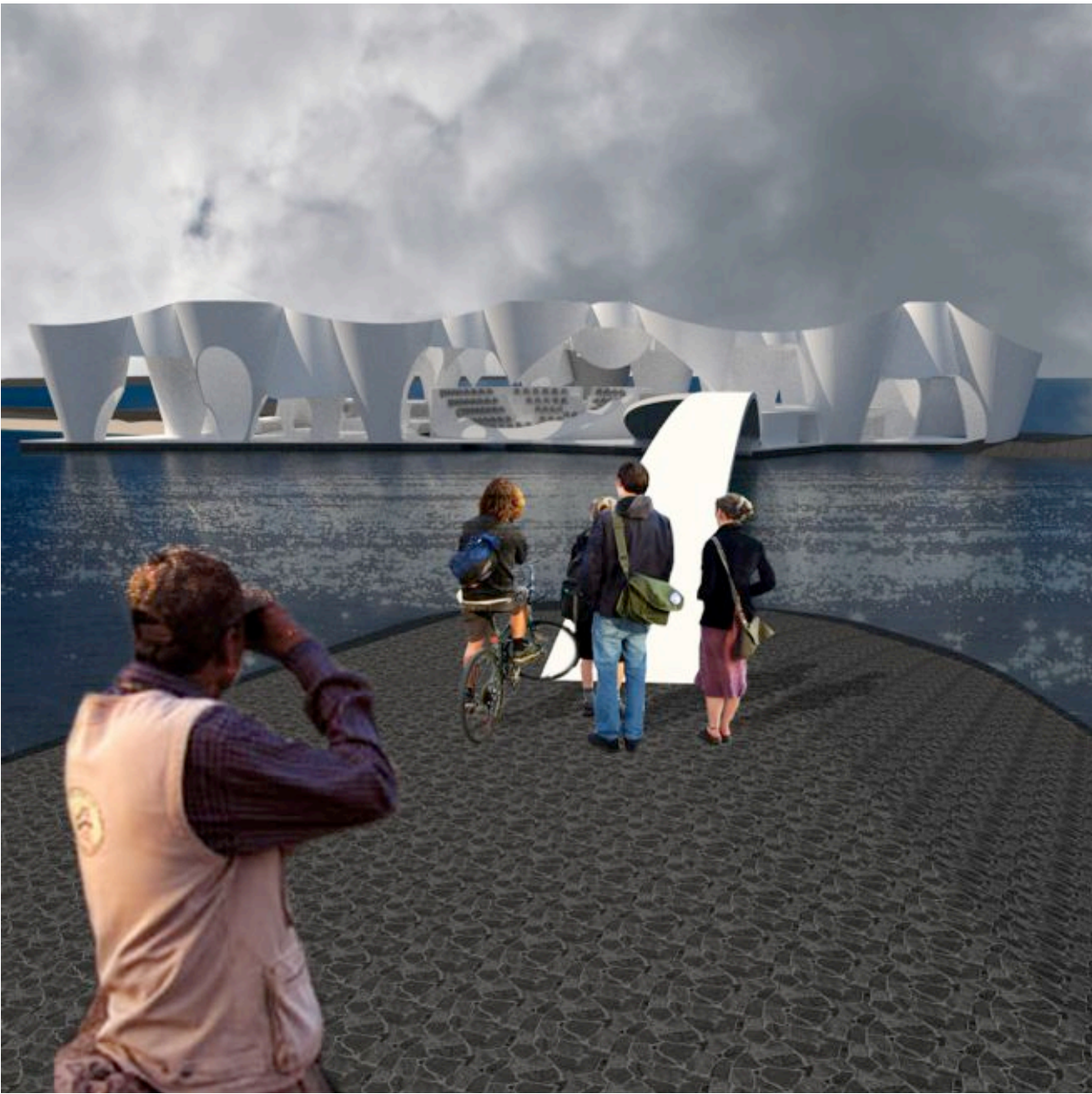
The WSCA's programme is accommodated by a lightweight, self-supporting structure; a configuration of cone-shaped elements that act as conciliator between inside and outside conditions and the programme underneath. Each of these elements has its own specific role in doing so.

On the upper side, the cones have been excised according to their specific function and orientation, either or both to catch sunlight, warmth, wind and rain. On the lower side they have been excised either or both to direct sunlight, accumulate warmth, muffle sounds and to give shape to the enclosed space. The landscape has also been used in both directions: to moderate and accumulate inside and outside conditions and to articulate the different levels in the programme.

The landscape, its programme and environmental dynamics are involved in a synergetic relation.



Aerial View from IJsselmeer-side

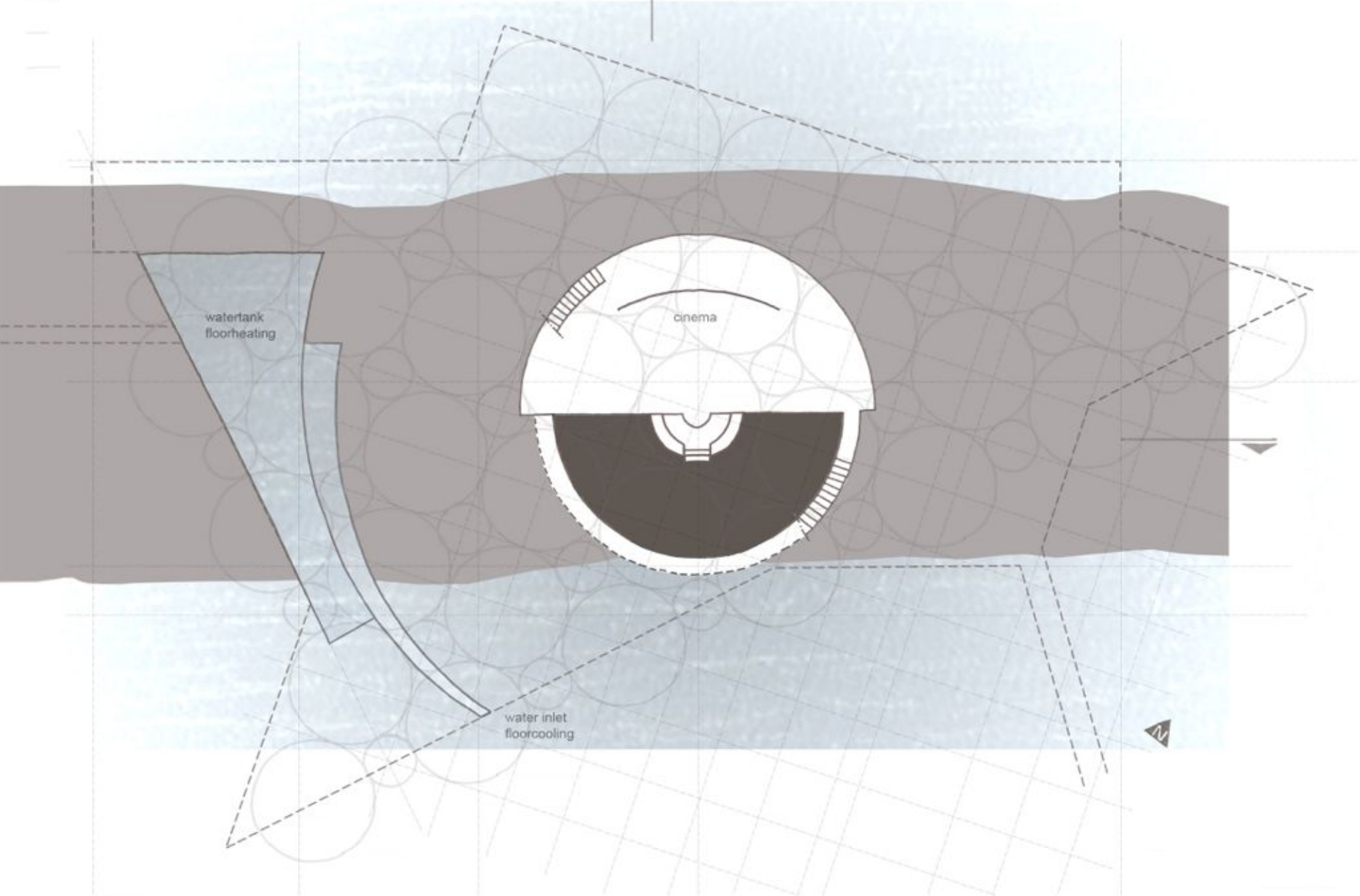


Approaching the World Sustainability Centre

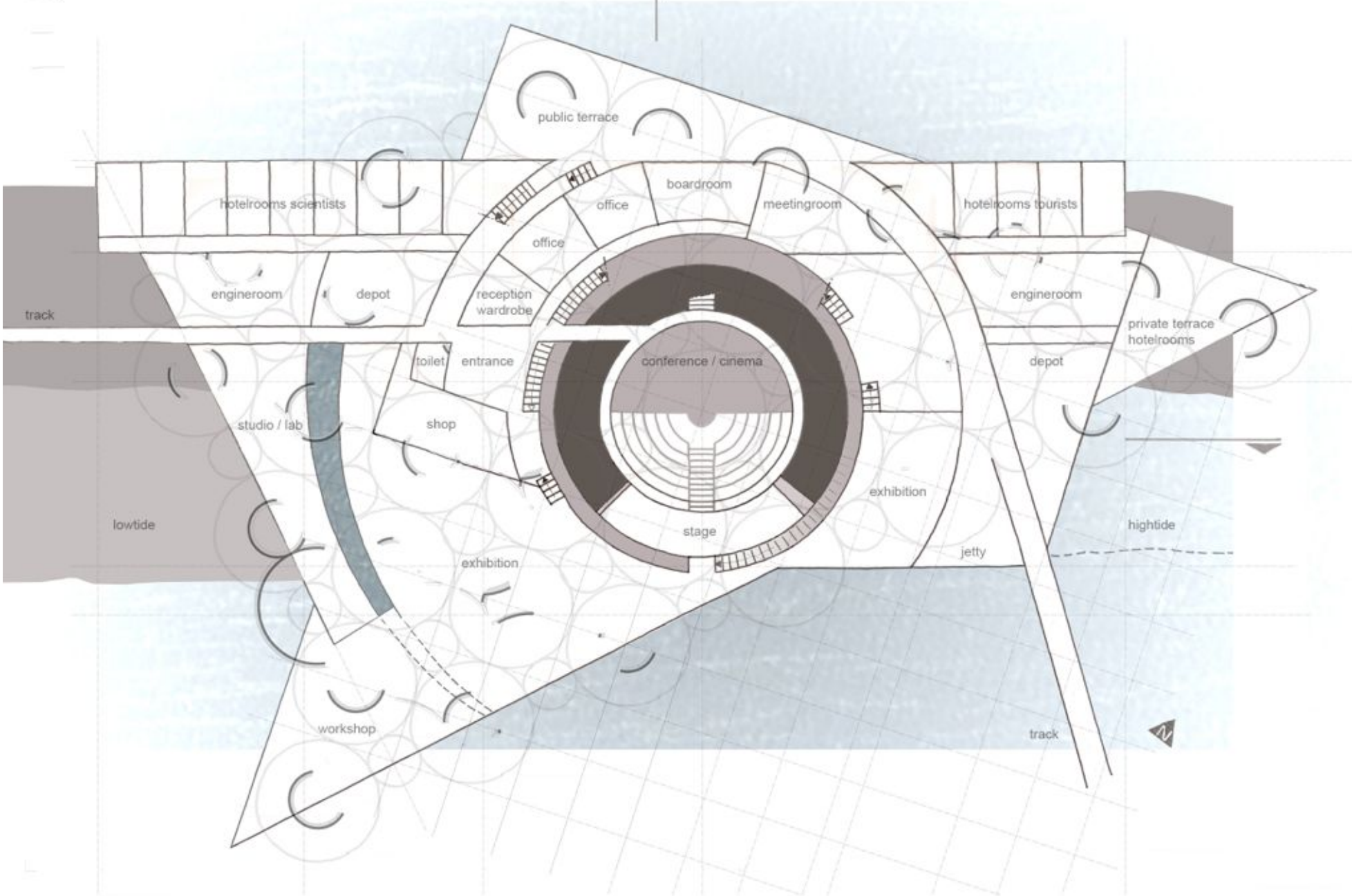


Waddenzee-facade

floorplan -4000 NAP

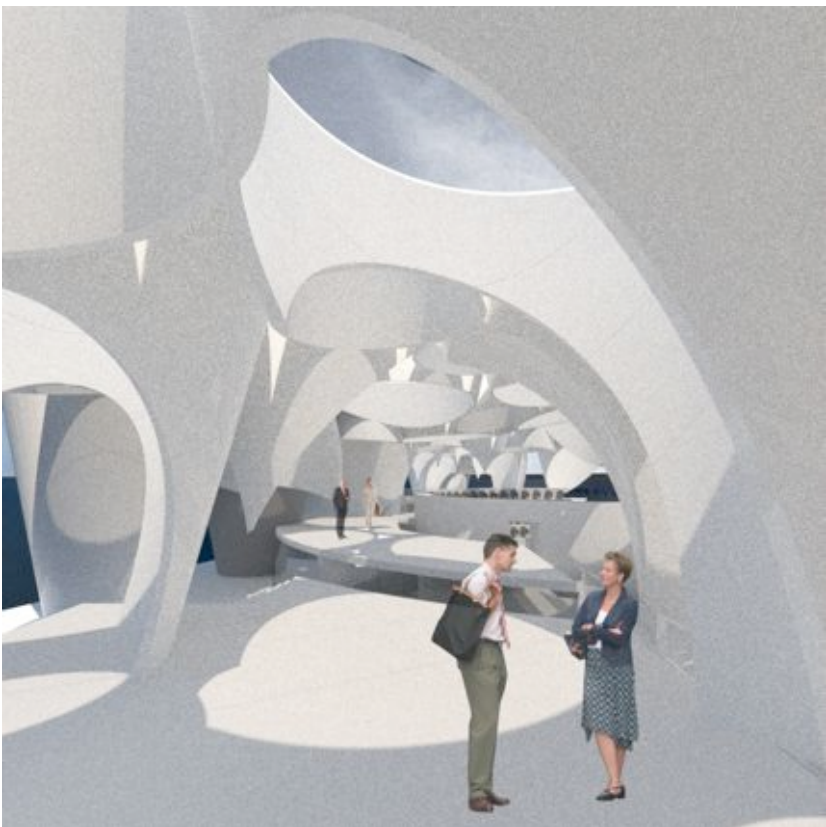


floorplan +1000 / +2200 NAP

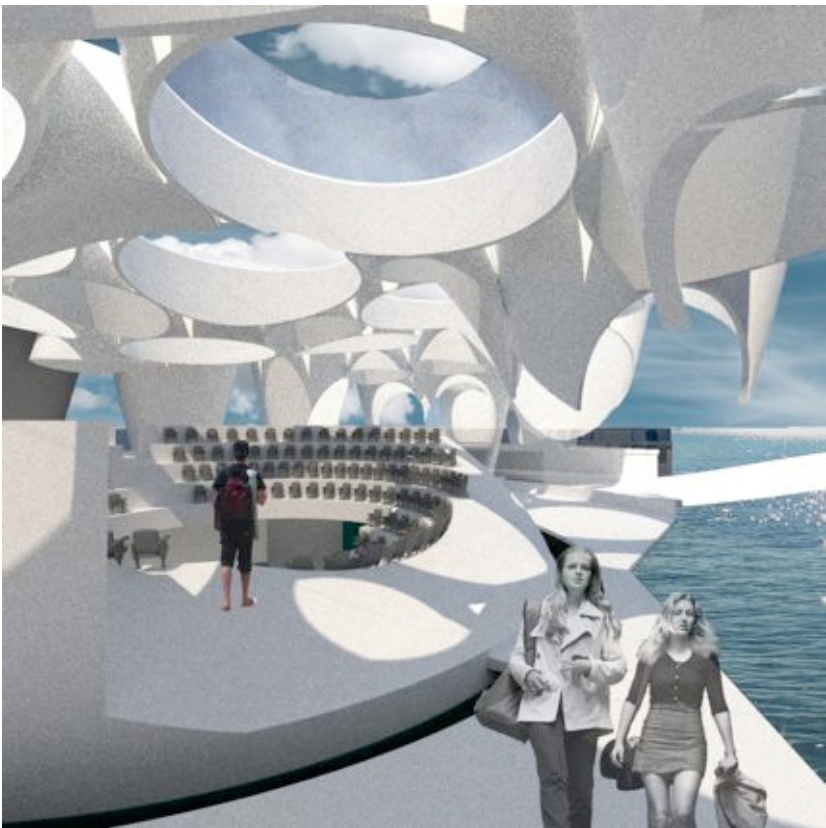




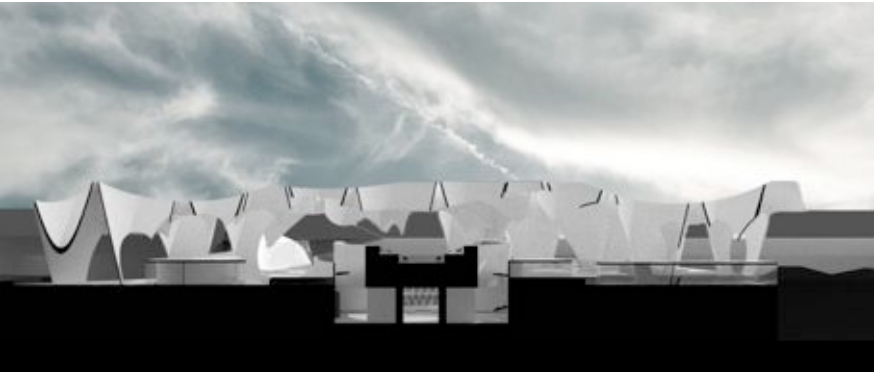
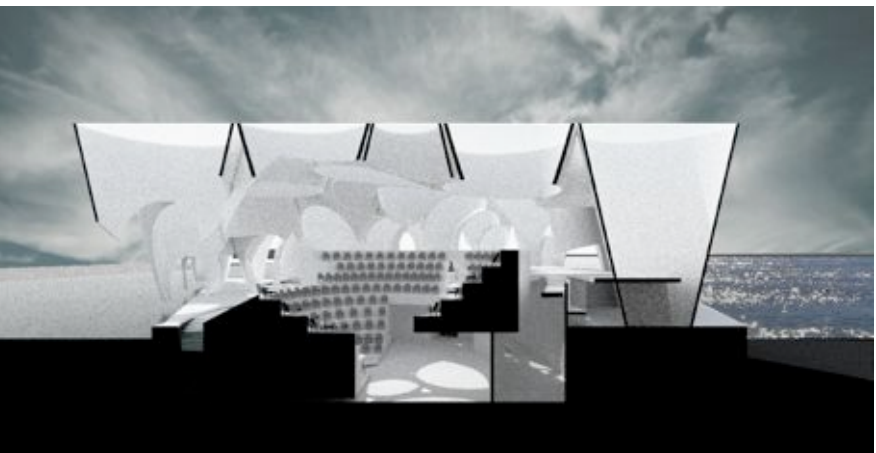
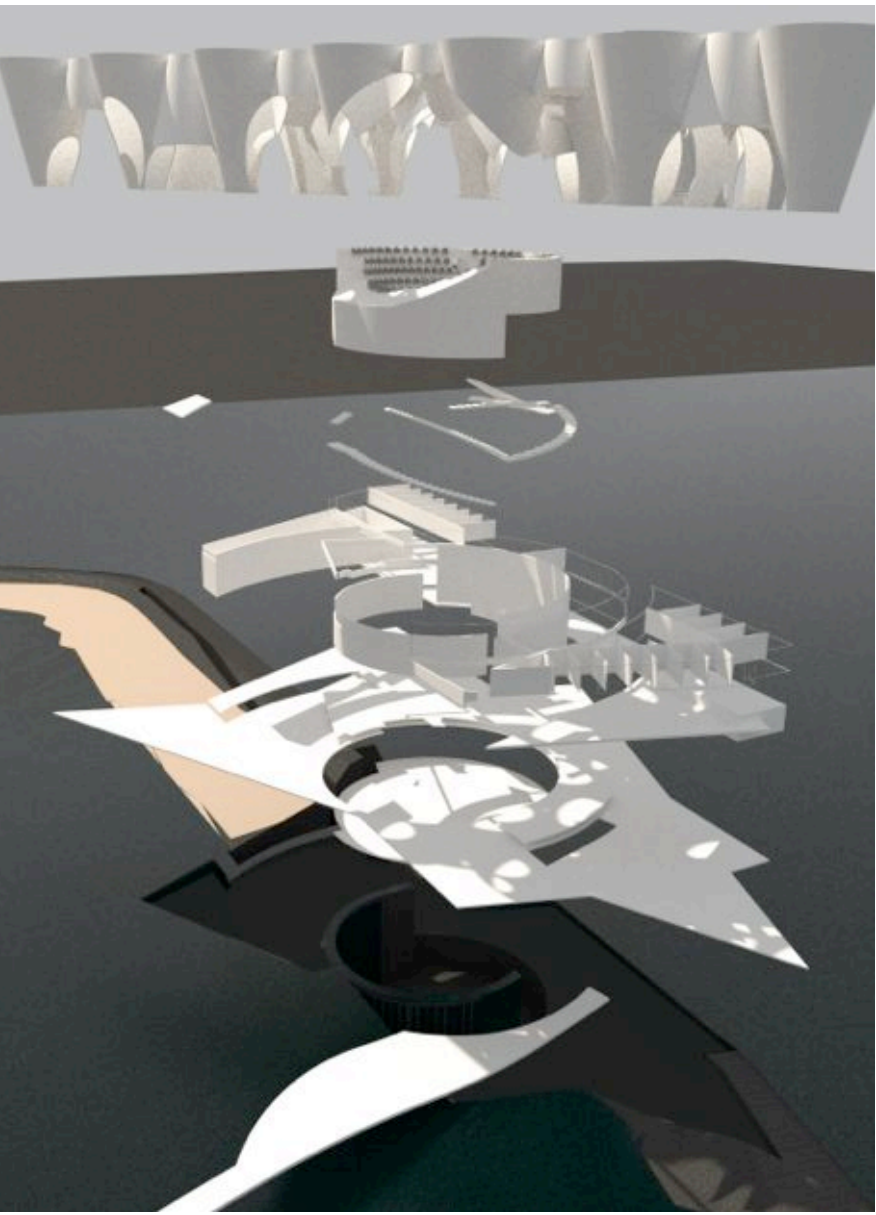
Auditorium / Cinema



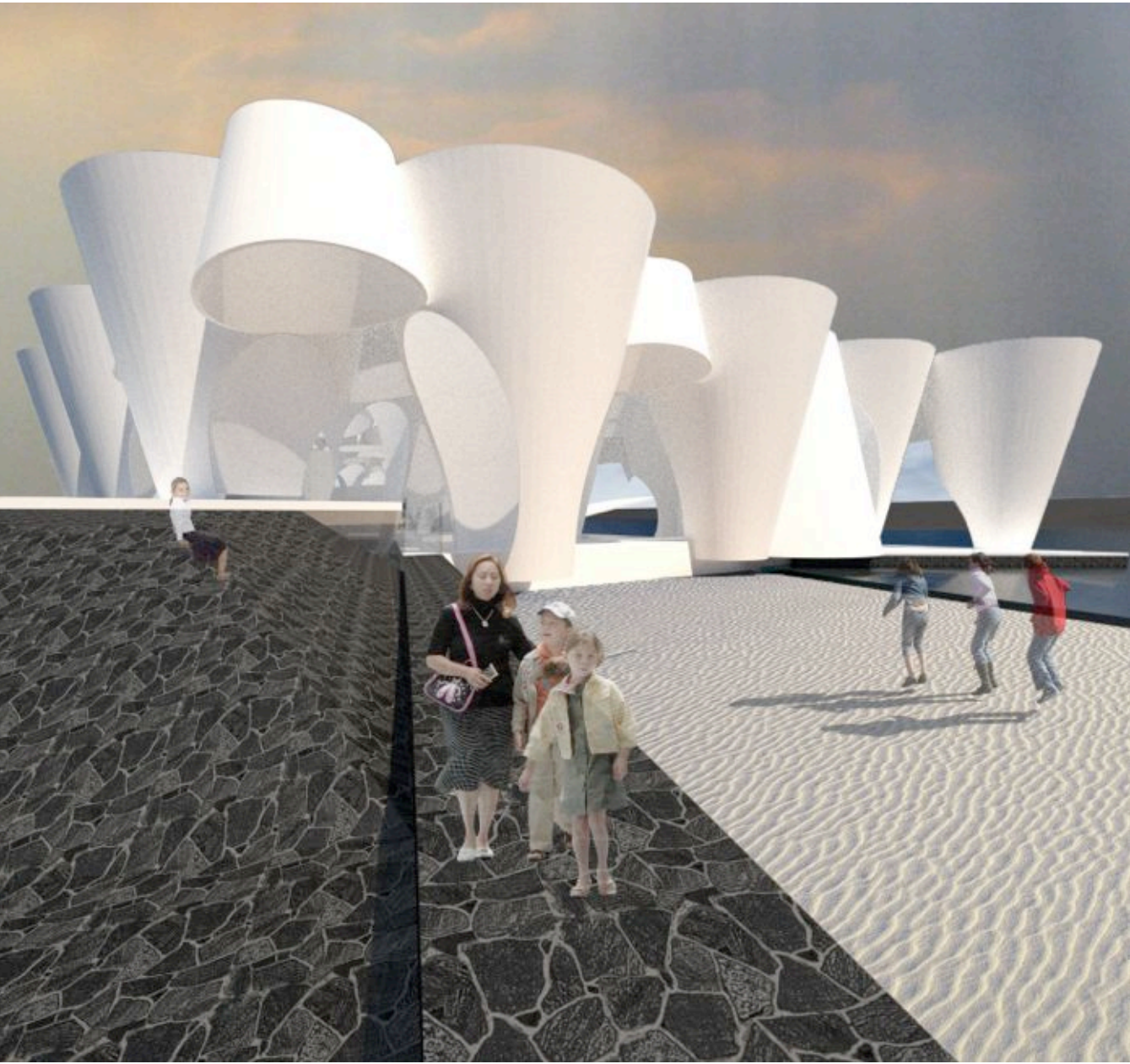
Restaurant



A large, multi-level auditorium and cinema form the centre of the WSCA. It is used to either connect or disconnect different parts and levels of the programme so that the building can be used in different ways on different times of the day, week, month or year. An architectural route meanders through the building, giving access to inside and outside programme. The auditorium and the cinema can be used when the exhibition space is closed, as well as the hotelrooms for both scientists and tourists, the restaurant and the terraces.



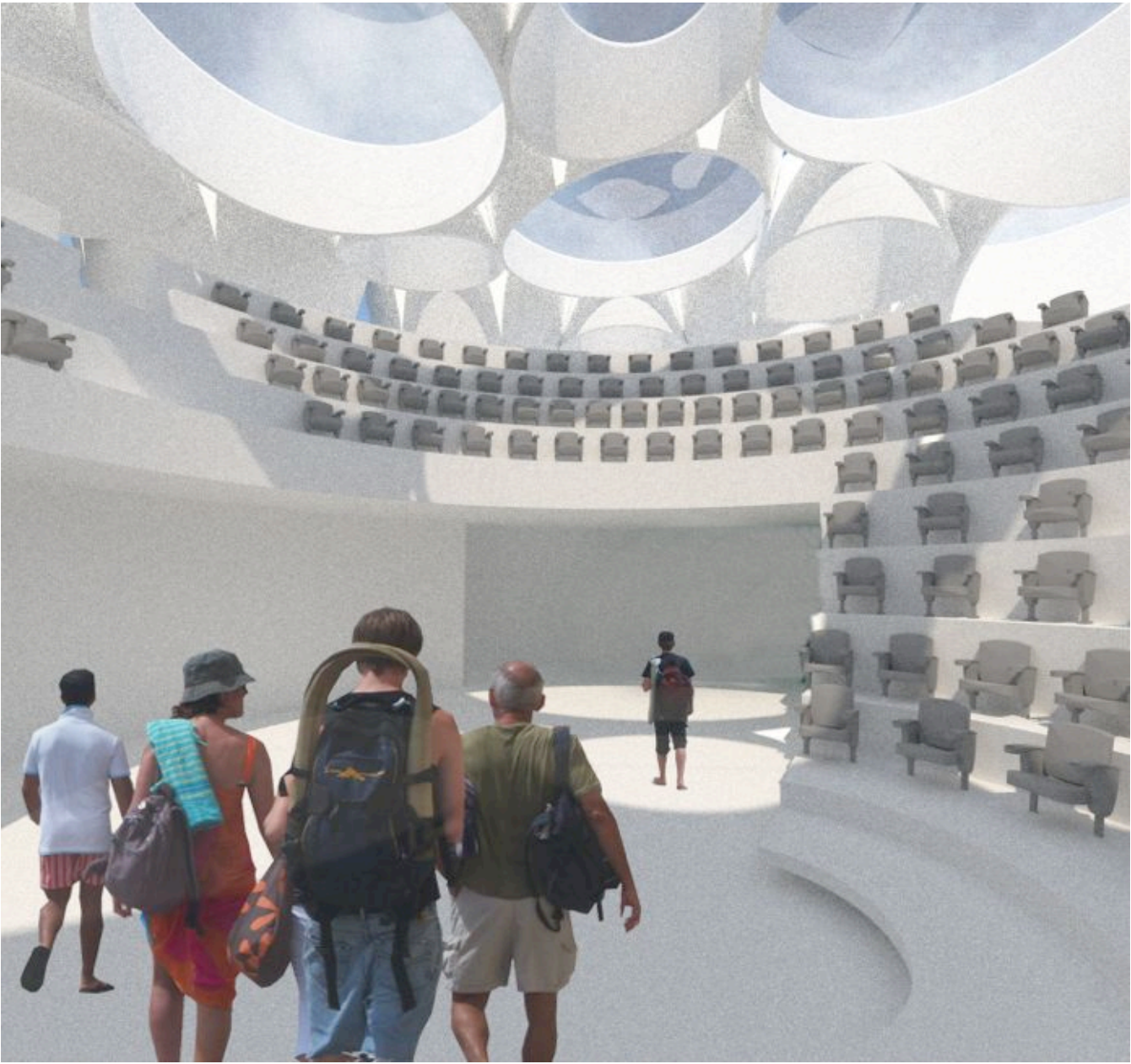
Sections / Exploded View



Approaching via track

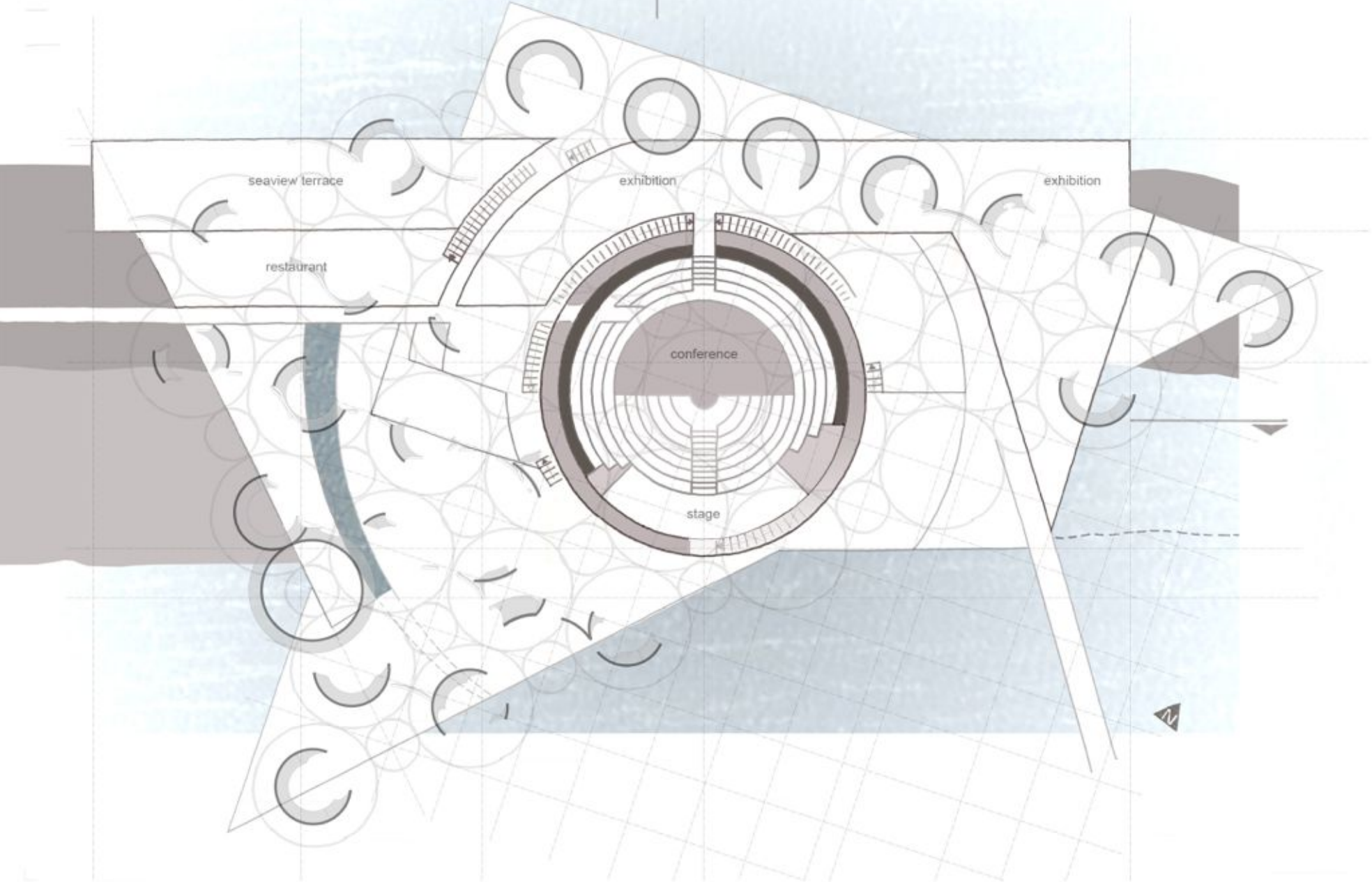


Auditorium seen from bridge



The Cinema

floorplan +4200 NAP



roofscape

